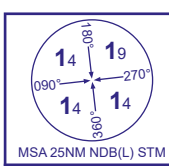


INSTRUMENT APPROACH CHART - ICAO

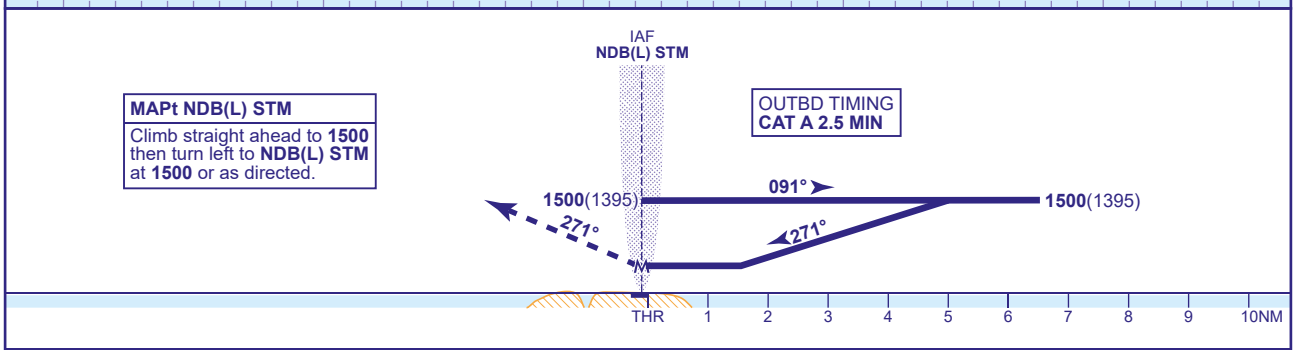
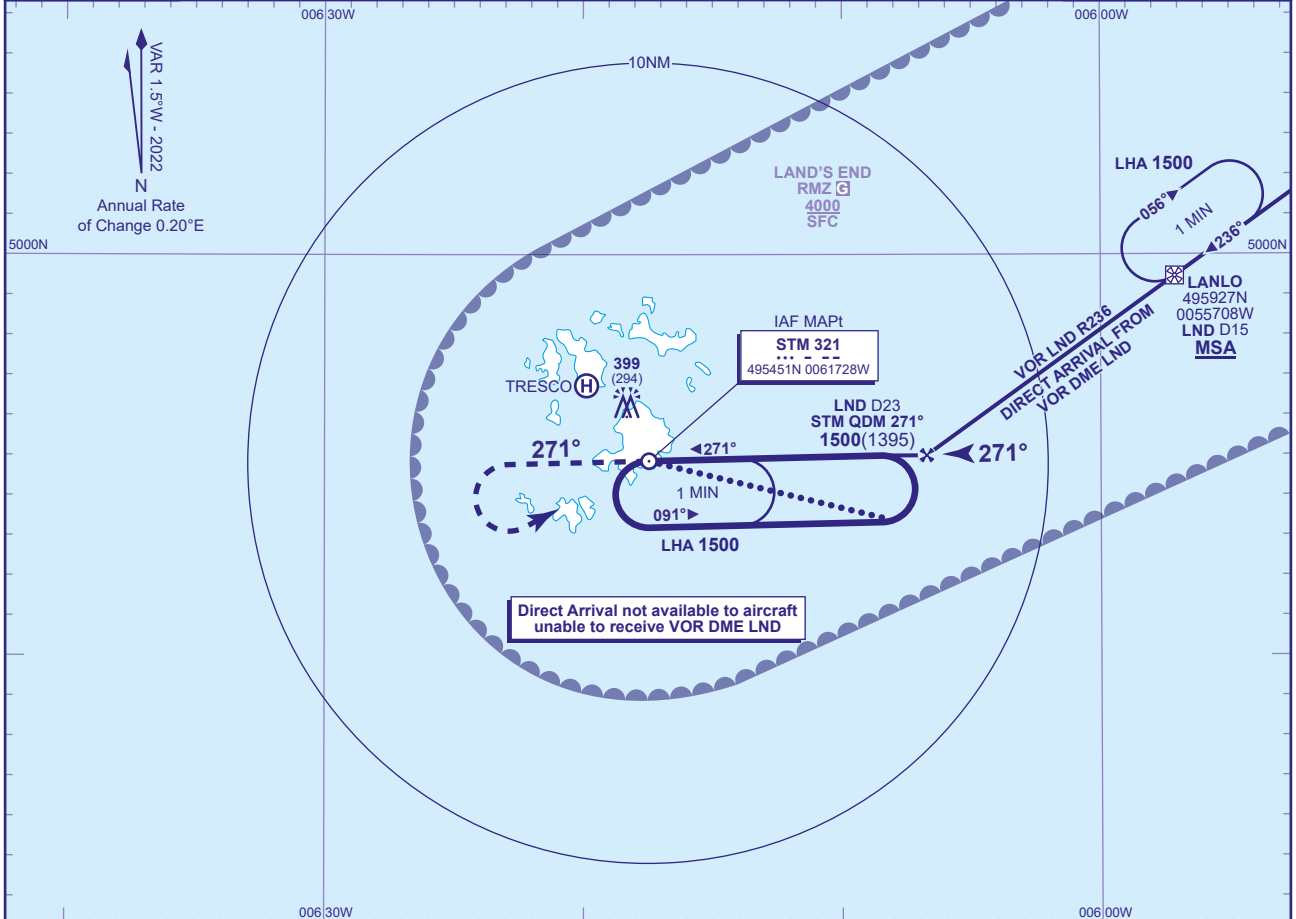
SCILLY ISLES/ST MARY'S

**NDB(L)
RWY 27**
(ACFT CAT A)



APP	124.880	SCILLIES APPROACH	AD ELEVATION	121
TWR	124.880	SCILLIES TOWER	THR ELEVATION	105
			OBSTACLE ELEVATION	399 AMSL (294) (ABOVE THR)
			BEARINGS ARE MAGNETIC	

TRANSITION ALTITUDE	3000
---------------------	------



Aircraft Category		A
OCA (OCH)	Procedure	510(405)
	Total Area	700(579)
VM(C)OCA (OCH AAL)	South of RWY 09/27	520(399)

ALTERNATIVE BASE TURN PROCEDURE
Overhead NDB(L) STM (IAF) at **1500(1395)** fly outbound on NDB(L) STM QDR 105° for 2.5 MIN. Base turn left onto FAT.
When established continue as for basic procedure.

DIRECT ARRIVAL VIA VOR DME LND
Arrival via VOR LND R236 **not below MSA**. After crossing LANLO R236 LND DME 15 (IAF) descend to be at **1500(1395)** by the FAF (R236 LND DME 23). When established on the FAT descend to MDA.

- NOTE**
- 1 FAT is offset 2° and intercepts the RWY C/L 0.9NM before the THR.
 - 2 VOR DME LND is not monitored by Scillies ATC.
 - 3 Nominal distance FAF - runway threshold 6.7NM.